

# YSGOL Y LLAN



Guidance for parents and pupils on  
returning to school.

All schools across Wales will start to allow children to return to school from Monday 29<sup>th</sup> June. Children from Reception to Year 6 will have the opportunity to "Check in, Catch Up, Prepare for summer and September".

To help you to understand and prepare for this, we have produced this booklet which will hopefully answer your questions and provide you with a clear understanding of what school will look like.

To support you in making the decision on whether your child(ren) should attend school, the key issues for your consideration are highlighted in a red text box.

### How will we organise returning to school?

We will aim to accommodate approximately one third of our children within school at any one time to try to allow for social distancing guidelines to be upheld. In order to do this, we will allow certain groups (bubbles) to come in on given days. They will be allocated four sessions, split into two blocks (see example below).

EXAMPLE timetable:

<b>MONDAY</b> <b>29<sup>TH</sup> JUNE</b>	<b>TUESDAY</b> <b>30<sup>TH</sup> JUNE</b>	<b>WEDNESDAY</b> <b>1<sup>ST</sup> JULY</b>	<b>THURSDAY</b> <b>2<sup>ND</sup> JULY</b>	<b>FRIDAY</b> <b>3<sup>RD</sup> JULY</b>
Group A (Classes 1-4)	Group A (Classes 1-4)	Thorough clean in classrooms	Group B (Classes 1-4)	Group B (Classes 1-4)
<b>MONDAY</b> <b>6<sup>TH</sup> JULY</b>	<b>TUESDAY</b> <b>7<sup>TH</sup> JULY</b>	<b>WEDNESDAY</b> <b>8<sup>TH</sup> JULY</b>	<b>THURSDAY</b> <b>9<sup>TH</sup> JULY</b>	<b>FRIDAY</b> <b>10<sup>TH</sup> JULY</b>
Group B (Classes 1-4)	Group B (Classes 1-4)	Thorough clean in classrooms	Group A (Classes 1-4)	Group A (Classes 1-4)

The timetable will not be as simple as the example as we have more children to fit in within certain year groups. Therefore, parents will receive an individual email with specific allocated dates/times and information on 'drop off' and 'pick up'.

Wednesday will be closed to class groups and will be a day when classes are cleaned thoroughly.

Please consider how your child may respond to or cope with being in school for these four days prior to the summer break.

### How will the children in the classes be organised?

- Each class will be split up to 4 groups (depending on numbers in the class). There will be no more than 8 in each group/bubble.
- Each group/bubble will be allocated a classroom and a set of toilets. The children will remain in their allocated classrooms throughout the day and will only be allowed to see (at a social distance) the other children in that room and the allocated member of staff.

Please see **Appendix 1 - Plan of the School.**

Please consider how your child may respond to or cope with only being permitted to see (at a social distance) a limited number of children in that room (these might not be their friendship groups) and the one member of staff allocated to them (we hope that this will be the class teacher but cannot guarantee it for all sessions).

### A guide to the school day

- We aim to allow children into school in two small groups at a time - entering the school building by two different entrances (main entrance and Class 1 exit).
- **Foundation Phase school day 8.45am - 2.30pm**
- **Key Stage Two school day 9.00am - 2.45pm**
- Key Stage 2 & Foundation Phase children will have two separate 'drop off' & 'pick up' times with a 10-minute window in between. We will provide you with these times that you must keep to. If you miss your allocated time we will ask you to wait until the end of the drop off period so that your child does not mix with other groups.
- **ALL CHILDREN** must be brought to school by a parent / carer.
- **Please do not bring or collect children from other households.**
- Parents/carers **must wait in their cars** at all times.
- Parents are **NOT** allowed into the school building.
- Parents that **walk to school** will be asked to wait opposite the school gates on the pathway alongside the Church walls (at a social distance of 2 metres). These children will be safely called over first, one at a time.
- We are asking parents who **drive to school** to park on the road alongside the wooden rail (see Appendix 2). Once the teachers/staff are at the gate, cars may drive down and drop children off one-by-one.
- Children's temperatures will be taken before parents leave. If your child has a raised temperature, we will ask you to take him or her home. Please **DO NOT** send children to school if they are showing any symptoms of Covid\_19.
- Groups will be asked to line up on the 2 metre social distancing markings on the driveway. Once the group is all accounted for, children will enter the school through different entrances, according to where their allocated classroom is.

- Your child will be required to wash their hands or use the antibacterial gel/handwash in class on entry.

**Please see Appendix 2 - Area for parking and Driveway markings**

- Classrooms have been set out so that there is a 2-metre social distance between the children and staff.

**Please see Appendix 3 - Example classrooms**

- There will be toilet breaks throughout the day and children will be monitored when travelling to the toilet that has been allocated to that group. We have planned effectively so that most boys and girls have separate toilets. **Only 1 child at a time may use the toilet facilities.**
- The children will have access to the outdoors weather permitting & we will endeavour to be outside as much as possible. The children will be allocated a 'play space' outside where again, they will not be permitted to mix with other groups. **Only two groups will be outside on the playground at any one time.**
- Children will not be asked to wear school uniform but they must wear clean clothes appropriate for outdoors. Please note that doors and windows will be kept open where possible to ensure maximum circulation of fresh air - this may need to be considered when choosing appropriate clothing.
- Staff will wear relaxed comfortable clothing for the same reason as the pupils.
- Whilst children are in school we aim to continue the distance learning work which will have been set by their teachers. We also hope to review their well-being and generally 'catch up' with how they have been getting on. We will not be teaching content that has not been set for distance learning or trying to catch up with the past 3 months.
- You will be asked to collect your child at a specific time at the end of the day. Again, we hope to send out two groups (socially distanced) in 10-minute intervals. Your child will be brought out to the driveway by the member of staff looking after them. We ask that parents once again park their cars facing down the road towards the school. One at a time, cars can drive down the road and pick-up their child. It is imperative that you remain in your cars and do not mix socially during dropping off and collection times or allow your children to play together after school.
- Please note, there will not be any provision for Breakfast Club or After School Club.
- Please note, there will be no Playgroup provision within school as the space is required for Key Worker children.

### What should my child bring to school?

You may provide your child with a clearly labelled water bottle and a piece of fruit for snack. Unfortunately, your child will not be able to use the water fountain to refill their water bottles.

Your child will NOT need their book bag, school bag or pencil case. All equipment will be provided for them.

In brief, your child must not bring anything else to school other than appropriate clothing (e.g. coat if the weather is poor), water bottle and a fruit snack.

### What provision is there for lunch?

Flintshire County Council are providing a free packed lunch for ALL children attending school, consisting of a sandwich, piece of fruit, a snack (biscuit or crisps) and a bottle of water.

They will cater for dietary needs and offer alternatives for vegans etc. Parents will be asked to complete a short survey with the sandwich choices. This will be sent out on a Monday or Tuesday, the week prior to the children attending school.

**If you have specific dietary requirements or wish to discuss these provided meals, then we ask you to contact the school office directly.**

### What should my child wear?

Your child may wear their own clothes. We ask that your child wears a clean set of clothes every day. As we hope to be outside every day, please make sure that your child is wearing suitable clothing. Trainers or flat shoes are advised. Once your child comes home from school, we advise that all clothes that s/he has been wearing go straight into the washing machine and your child has a shower. If your child wears a coat to school, they will be required to hang this on the back of their chair. We do understand that it may not be feasible for you to wash coats every day.

We will not be using the cloakrooms areas. Please note, we will endeavour to keep windows and doors open to ensure adequate ventilation which may make the building cooler. Please make sure that your child is wearing suitable clothing which will keep them warm (or cool!)

## Social Distancing

Although children may see some of their friends we will ask them to always remain at least 2 metres apart. In the classrooms we have set up the tables to help with this. We will have marked areas around the school and some classrooms (KS2) may have a one-way system in and out of the classroom (see Appendix 1). We have put up signage to remind children of the rules. We expect that older children may find this easier to do. From our experience of working at the Hub school we have found it very difficult for younger children to socially distance.

When we are playing outside the children will have allocated play spaces and these will be coned off. The children within that play space will be asked to play at a social distance away from their peers.

Please talk to your child about this as there may be times when they are asked to move away from another child or adult which may be very confusing or upsetting for them.

## PPE

The school has purchased PPE and some members of staff may have face masks. If a member of staff would prefer to wear PPE, face mask or gloves whilst in school we will support them in doing so.

Guidance suggests that children should not wear PPE such as gloves or face masks as they are more likely to touch the mask and surrounding areas of their face. The gloves will also carry any germs/virus as opposed to regular handwashing that will eliminate the risk. However, if you would like to send your child into school wearing such PPE, please feel free to do so but let us know via the school office in advance so that we are aware.

If you do choose for your child to wear PPE, it is your responsibility to explain to your child why they are wearing the PPE and that they will need to stay on unless they are eating or going to the toilet. If your child continues to take their PPE off or play with it, we will ask them to remove it for their own safety and that of others.

## Accidents and Intimate Care

If your child falls or hurts themselves during the day and needs medical attention, it may be necessary for staff to put on PPE to treat them. The same applies to toileting accidents. Staff will ask children to try to clean themselves up as much as possible but will wear PPE if intervention is needed. During the first session with children, staff will talk through a 'Coming Back to School in a Bubble' booklet and will also have a look at some PPE that they may see during their time in school.

Please talk to your child about this as being treated by an adult in PPE may be very confusing or upsetting for them.



## Illness

If your child falls ill during the school day, you will be notified immediately and asked to collect them as soon as possible. Your child may not return to school until they are completely well again, and in the instance of vomiting and diarrhoea your child may not return until 48 hours has passed since they were last ill.

Please note that if your child becomes unwell and needs to see a doctor or go to hospital we will ask for you to attend immediately. If urgent care is required, we will arrange for your child to be transported. By sending your child to school, please understand that we will take these necessary steps if you cannot be contacted.

If your child begins to display symptoms of Covid-19 we will immediately put them into an isolation room and then contact you to collect them. They should isolate and not return to school for 7 days or until they have had a negative result for Covid\_19. It may be necessary to close the classroom if this occurs for deep cleaning which will mean that the entire group within this room will have to be sent home. We will inform other parents if this occurs.

Do not send your child back to school if they or anyone in their family has symptoms of Coronavirus. By sending them back to school you are making a declaration of their health.

### Medical

If your child has a medical condition, e.g. asthma, and you would still like to send them into school, please ensure that all medicines are labelled and sent in a plastic box with a lid at least 72 hours before your child attends school. We ask that these medicines are kept in school for the entire 4 sessions and do not go home until your child has completed their final session. Please note, school staff will not be able to physically administer medicine. If your child has a medical condition that requires assistance from an adult, please contact the school office to discuss this need.

### Shielding

We are aware that some of you may have received or have family members who have received shielding letters. If you or someone in your family is in receipt of such a letter, we ask that you stay at home and children do not return to school.

### Hygiene / Cleaning

Children will be required to wash their hands when entering the school in the morning. They will continue to do this at regular intervals throughout the day, before and after eating, and when coming in from outside. In class we have access to soap, anti-bacterial gel and handwash which has a high alcohol content.

Children will be encouraged to keep their hands away from their faces and keep things out of their mouths. We will remind children of sneezing and coughing into a tissue or the crook of their arm - separate bins with lids will be allocated for these tissues.

Throughout the day, staff will wipe over surfaces, door handles and other equipment used throughout the day. Cleaning staff will clean the toilets around midday and cleaners will clean all areas at the end of the school day once all of the children and staff have left. We will close the school on Wednesday to class groups so that a deep clean may be carried out.



### Wellbeing of Children

Returning to school is going to be strange for pupils, staff and parents. The health and wellbeing of the children is paramount and we want children to settle back into school as quickly and safely as possible. If Covid\_19 has affected your child/ren or family in any way (e.g. family bereavement) or if it has simply impacted on yours or your child's health (e.g. increased stress and anxiety), please inform the office so that we can adequately safeguard your child and address their needs.

### Key Workers Childcare Provision

Children, where parents are key workers and have no other safe alternative to childcare, will be entitled to access the Childcare Provision. This provision will run from 8am to 5.30pm, Monday to Friday. This will be held in the school hall. Parents may bring these children to the school hall door (Breakfast Club entrance) at an agreed time (please avoid 8.45am and 9.00am when dropping off and 2.30pm and 2.45pm when collecting). Children who attend this provision will not be able to mix with their class groups.

## FREQUENTLY ASKED QUESTIONS: A GUIDE FOR PARENTS ON CHILDREN RETURNING TO SCHOOL

*Please note that these questions have been formulated based upon the communications by Kirsty Williams, First Minister for Education in Wales and are being updated as and when we receive further updates from WG, Local Authority or Headteacher Federations.*

### **Why are the children being offered the opportunity to return to school?**

Kirsty Williams, Minister for Education has described the return to school as "a chance to work together for pupils so that they can check in, catch up and prepare for the summer and September".

### **What if my child is shielding?**

Children who are shielding should not return to school, but contact with the class teacher and teaching materials will continue to be available digitally, as they have been throughout the lockdown period.

### **How many children will be permitted on the school premises at any one time?**

The total number of children on site will not exceed 1/3 of total numbers. Group/bubbles will not exceed 8 children but will be smaller where possible, especially with younger children.

### **What will be the focus of the activities if my child returns to school?**

It is expected that schools use this period in school to support the health and well-being of learners and their staff. The priorities will be; to check in with learners and support them in their preparedness for learning and consider next steps for learning as appropriate; to test the operations ready for the autumn term; and to continue to build the confidence of families in the very careful approach that is being taken. It is an opportunity for both learners and staff to prepare and get used to the new normal as it will look in September.

### **How will the school experience look for the foreseeable future?**

Learners will experience a blend of face-to-face and online learning. In the autumn, it is expected that schools will have to continue to accommodate all learners who can attend at a reduced time to allow for social distancing. It should also be noted that the evolving science tells us that an autumn spike in the virus is a very real possibility.

### What would it feel like for my child to return to school?

It is expected that when the children are in school, it will feel very different, with staggered arrivals, departures and breaks, with far more time being spent outdoors, weather permitting, and in much smaller groups/bubbles. However, it is expected that they will enjoy secure, dedicated time with teachers and classmates that they are familiar with.

### How can I decide on whether I return my child to school?

Decision makers, whether as a parent or a headteacher, always have to balance risks. In this current period, all of us have to think about the possibilities of direct and indirect harm. Kirsty Williams, Minister for Education believes that it is only by returning to their own schools that there will be increased attendance from the most vulnerable and disadvantaged children.

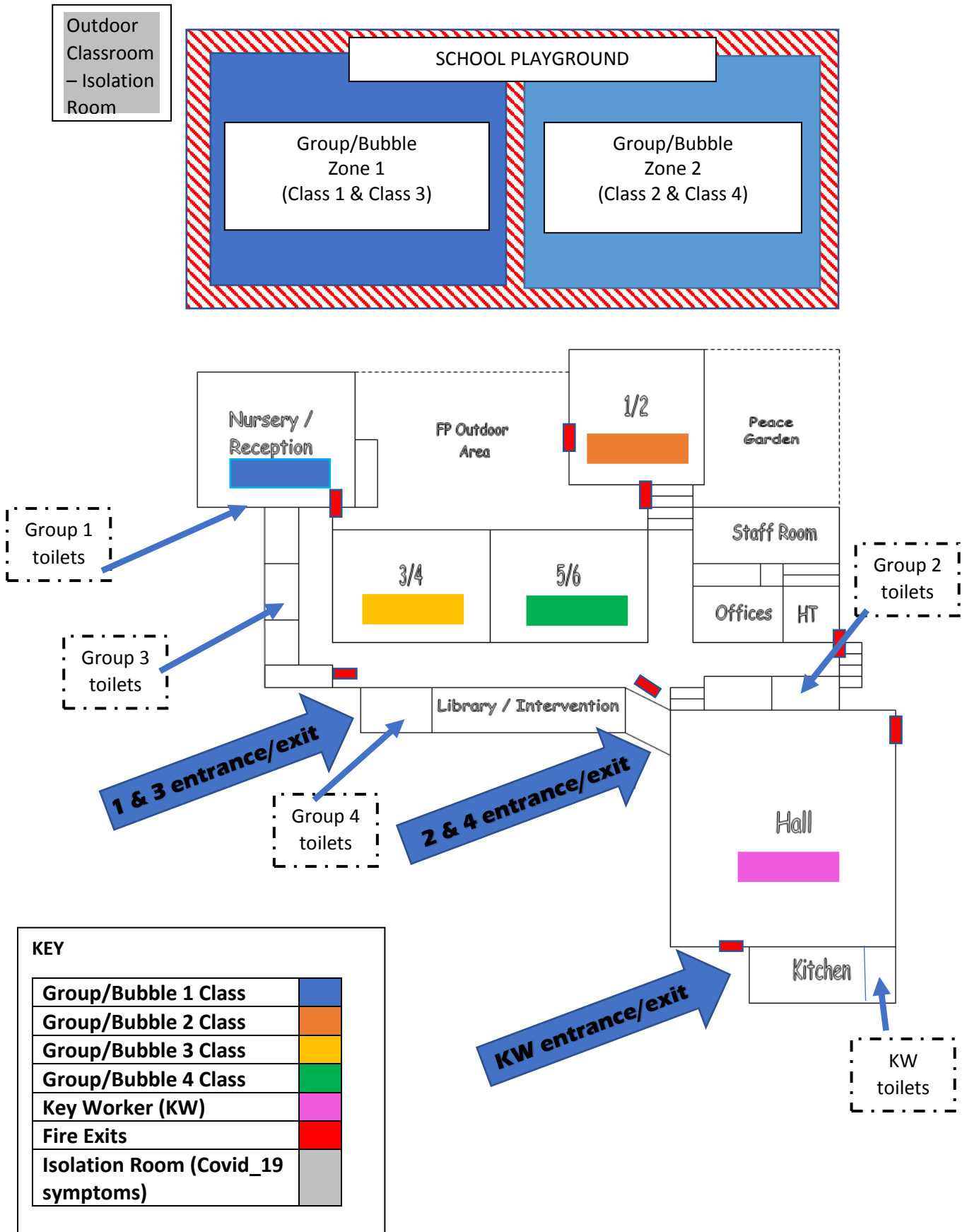
### Can Nursery children attend school?

Flinshire County Council have made to decision not to allow Nursery aged pupils to attend school facilities based on their age and ability to keep a social distance.

### Will teaching and support staff be subject to the new antibody testing programme?

It has been confirmed that school staff will be a priority in the new antibody testing programme, starting with staff who have currently been working in Hubs. On the proposed return date, the test, trace and protect scheme will have been in place for a month and will continue to expand.

## APPENDIX 1 - PLAN OF THE SCHOOL



## APPENDIX 2 - AREA FOR PARKING AND SCHOOL DRIVEWAY



Parents will be asked to park on the roadside (facing down the street) and remain in their cars until they see staff at the gate. One by one, cars can drive down to the gate & drop off/collect children at the designated times. Families who walk to school will be asked to wait on the pavement opposite the school gates and wait for instructions by staff.



Once the temperature of children has been taken, parents will be able to leave and children will line up (socially distanced) ready to enter the school via their designated entrances/exits.



Key worker children may be dropped off and collected from the entrance/exit of the school hall at an agreed time. Please avoid times that clash with class groups/bubbles.

### APPENDIX 3 - EXAMPLE OF CLASSROOMS / CORRIDORS



Class 4



Class 3

In classrooms the desks will be set 2 metres apart. Each child will be allocated a desk for the time they are in school. They will be provided with individual writing and drawing equipment. Water bottles and fruit snacks will remain on their table. Children will have their own individual pack of stationary.



Class 2



Class 1

Corridors have been marked to encourage social distancing when travelling around the school. Limited travel will take place. Posters and signs will also be visible throughout the school.

